

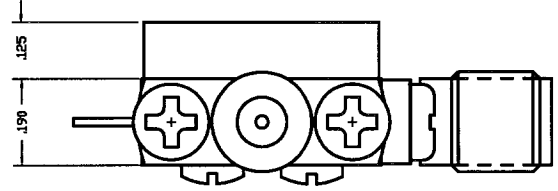
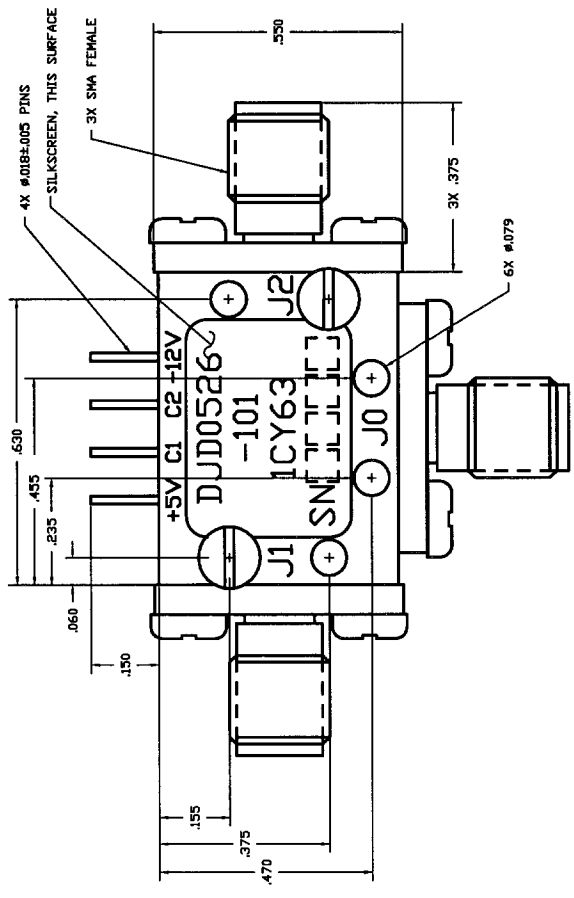
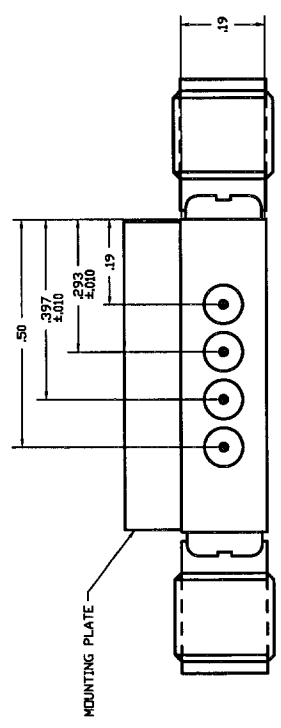
COMPUTER GENERATED DRAWING
MANUAL CHANGES NOT AUTHORIZED

REVISIONS

REV.	DESCRIPTION	DATE	RELEASED BY
NC	INITIAL RELEASE	7-25-95	D.REGEV
A	REV PER ECN: 7143		

SPECIFICATIONS:

- FREQUENCY RANGE: 0.5 - 26.5 GHz
- INSERTION LOSS: 0.5 - 4.0 GHz 1.7 dB MAX.
4.0 - 8.0 GHz 2.2 dB MAX.
8.0 - 12.0 GHz 2.3 dB MAX.
12.0 - 20.0 GHz 3.3 dB MAX.
20.0 - 26.5 GHz 4.3 dB MAX.
- VSWR(X50 OHM): 2.0:1 MAX.
- ISOLATION: 0.5 - 26.5 GHz 60 dB MIN.
100 nSEC. MAX.
- SWITCHING SPEED: +5V @ 75 mA MAX.
50% TTL TO 90% RF -15V @ 75 mA MAX.
- DRIVER BIAS: -55°C TO +100°C
- TEMPERATURE RANGE: ISOLATION
TTL HIGH INSERTION LOSS
TTL LOW



ITEM	QTY	FSCM NO.	PART OR IDENTIFICATION NO.	NOMENCLATURE OR DESCRIPTION	MATERIAL SPECIFICATION
PARTS LIST					
CONTRACT NO.			SIERRA MICROWAVE TECHNOLOGY		
APPROVALS			TITLE: OUTLINE FOR DJD0526-101		
DATE: 7-25-95			DWG NO. 605-0247-001		
CHECKED: D. REGEV			REV A		
DESIGN NO. D. REGEV			FSCM NO. 1CY63		
MATERIAL: XXX			SIZE: B		
FINISH: XXX			BRDR SCALE		
DO NOT SCALE DRAWING			SHEET OF		

ITEM	QTY	FSCM NO.	PART OR IDENTIFICATION NO.	NOMENCLATURE OR DESCRIPTION	MATERIAL SPECIFICATION
APPLICATION					
603-0035-001 DJD0526-101 USED ON					
LIST OF MAT'L					