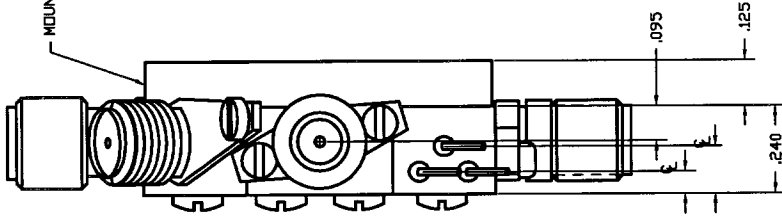
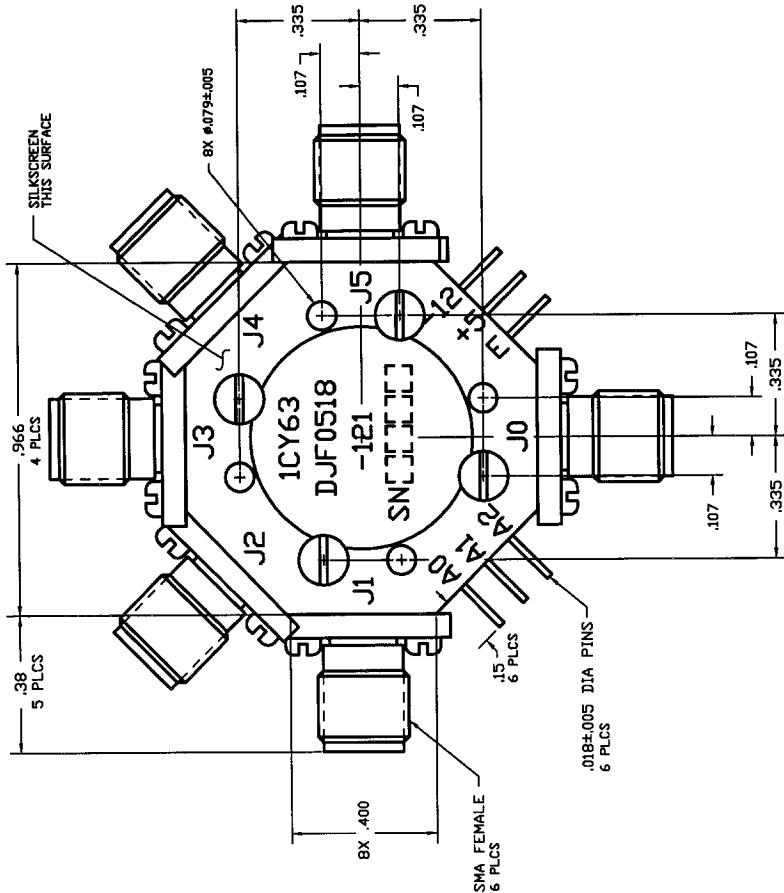


COMPUTER GENERATED DRAWING
MANUAL CHANGES NOT AUTHORIZED

REVISIONS

REV.	DESCRIPTION	DATE	RELEASED BY
NC	INITIAL RELEASE	8-2-93	K.M.
A	REV PER ECN: 7485		



SPECIFICATIONS:

- FREQUENCY: 0.5 TO 18.0 GHz
- INSERTION LOSS: 0.5 - 4.0 GHz: 2.1 dB MAX
4.0 - 8.0 GHz: 2.7 dB MAX
8.0 - 12.0 GHz: 2.8 dB MAX
12.0 - 18.0 GHz: 3.7 dB MAX
- VSWR@50 OHM: 2.0:1 MAX
- ISOLATION: 60 dB MIN.
- SWITCHING SPEED: 100 nSEC MAX
- DC POWER: +5V @ 250 mA MAX
-12V @ 75 mA MAX
- OPERATING TEMP. RANGE: -55° TO +100°C
- STORAGE TEMP. RANGE: -55° TO +100°C

TRUTH TABLE

LOW LOSS PORT	TTL Input Level			
	A0	A1	A2	E
J1	1	0	0	1
J2	0	1	0	1
J3	1	1	0	1
J4	0	0	1	1
J5	1	0	1	1
ALL OFF	X	X	X	0

ITEM	QTY REQ'D	FSCM NO.	PART OR IDENTIFICATION NO.	NOMENCLATURE OR DESCRIPTION	MATERIAL SPECIFICATION
PARTS LIST					
CONTRACT NO.		SIERRA MICROWAVE TECHNOLOGY			
APPROVALS		TITLE: OUTLINE FOR DJF0518-121			
DATE		DRAWN: PAC 8-2-94			
CHECKED:		DESIGN ENG. K.N. 8-2-94			
MATERIAL:		M.T. & PROCESSOR			
FINISH:		Q.L.			
DO NOT SCALE DRAWING		SIZE		FSCM NO. 1CY63	
603-0075-001		LIST OF MAT'L		DWG NO. 605-0196-001	
USED ON		APPLICATION		SHEET OF	