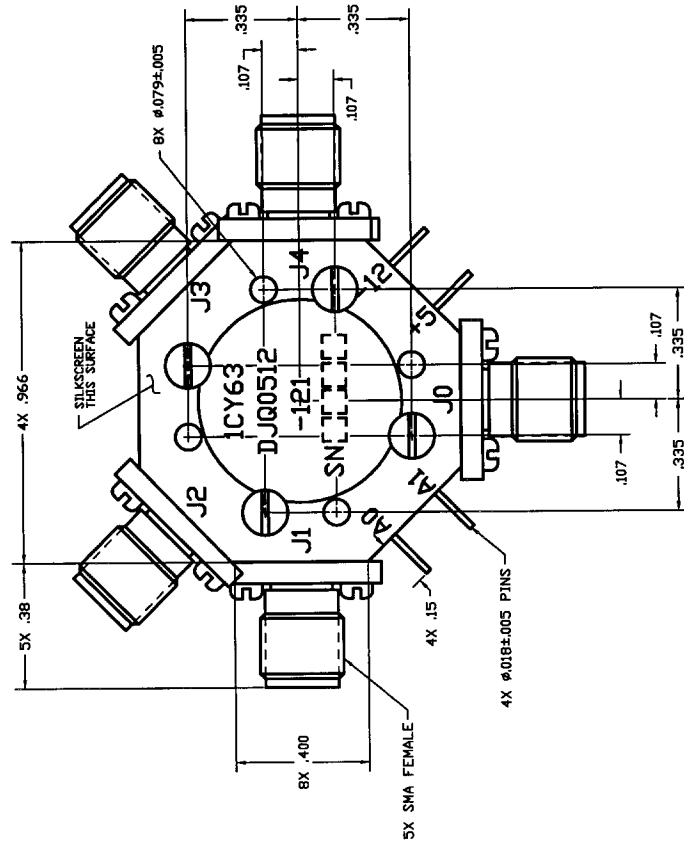


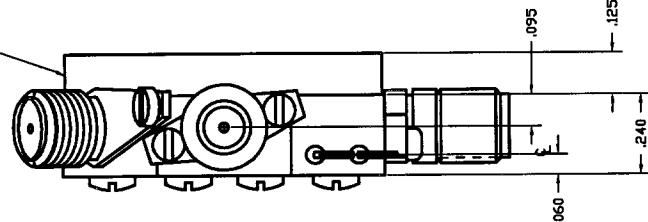
COMPUTER GENERATED DRAWING
MANUAL CHANGES NOT AUTHORIZED

REVISIONS

REV.	DESCRIPTION	DATE	RELEASED BY
NC	INITIAL RELEASE		



MOUNTING PLATE



SPECIFICATIONS:

FREQUENCY: 0.5-12.0 GHz
 INSERTION LOSS: 0.5-4.0 GHz: 1.9 dB MAX
 4.0-8.0 GHz: 2.6 dB MAX
 8.0-12.0 GHz: 2.7 dB MAX
 VSWR(SO DHM), (ON or OFF): 0.5-12.0 GHz: 2.0:1 MAX
 ISOLATION: 0.5-12.0 GHz: 60 dB MIN.
 SWITCHING SPEED: 100nSEC MAX
 DC POWER: +5V @ 125mA MAX
 -12V @ 75mA MAX

TRUTH TABLE:

LOGIC PORT	TRUTH LEVEL
A0	A1
J1	0
J2	0
J3	0
J4	1

OPERATING TEMP. RANGE: -55° TO +100°C
 STORAGE TEMP. RANGE: -55° TO +100°C

ITEM	QTY REQ'D	FSCM NO.	PART OR IDENTIFICATION NO.	NOMENCLATURE OR DESCRIPTION	MATERIAL SPECIFICATION
PARTS LIST					

CONTRACT NO. **SMD SIERRA MICROWAVE TECHNOLOGY**

TITLE: **OUTLINE FOR DJQ0512-121**

APPROVALS: **J. DUTSON** DATE: **8-18-00**

CHECKED: _____ DESIGNER: _____

MAT. & PROCESSES: _____

Q.A. _____

FINISH: _____

DO NOT SCALE DRAWING

603-0074-001	DMQ0512-121	REV	FSCM NO.	DWG NO.	REV
LIST OF MAT'L	USED ON	B	1CY63	605-0467-001	NC
APPLICATION		SIZE	FORM	SHEET	OF
		B	1CY63	605-0467-001	NC