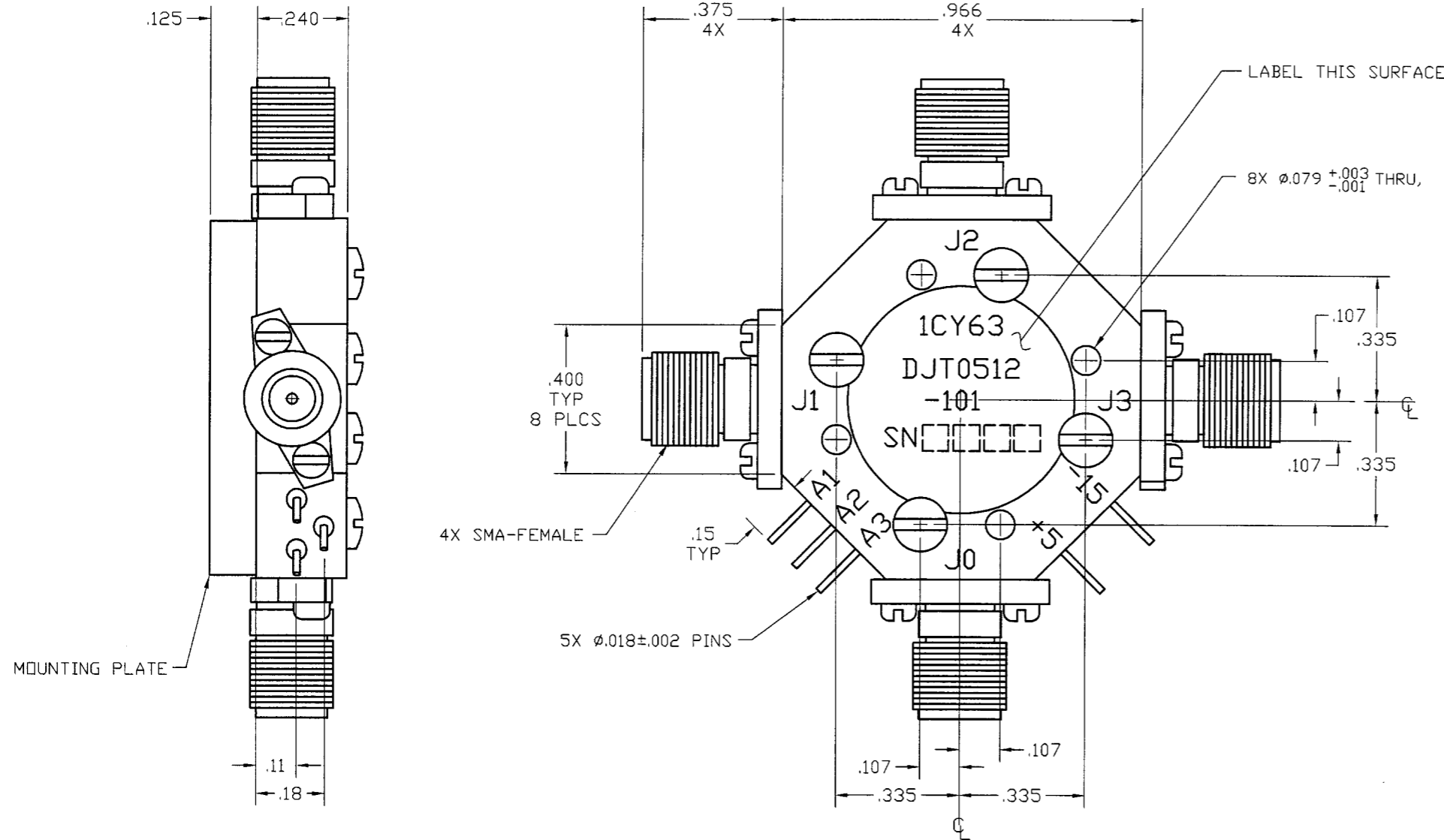


REVISIONS

REV.	DESCRIPTION	DATE	RELEASED BY
NC	INITIAL RELEASE	5-22-98	JLA
A	REV PER ECN: 6822, 9830	5-09-05	R.TS



SPECIFICATIONS:

FREQUENCY:	0.5 - 12.0 GHz
INSERTION LOSS:	0.5 - 4.0 GHz 1.9 dB MAX 4.0 - 12.0 GHz 2.5 dB MAX
VSWR:	0.5 - 12.0 GHz 2.0:1 MAX
J0 - ON ONLY J1, J2, J3 - ON OR OFF	
ISOLATION:	60 dB MIN
SWITCHING SPEED:	100 nSEC MAX
CONTROL:	TTL LOW - INSERTION LOSS TTL HIGH - ISOLATION
TEMPERATURE:	
OPERATING:	-54° TO +100° C
STORAGE:	-54° TO +100° C
BIAS CONDITIONS:	+5V @ 150 mA MAX -15V @ 75 mA MAX

ITEM	QTY REQ'D	FSCM NO.	PART OR IDENTIFICATION NO.	NOMENCLATURE OR DESCRIPTION	MATERIAL SPECIFICATION
PARTS LIST					
UNLESS OTHERWISE SPECIFIED DIMENSIONS ARE IN INCHES TOLERANCES ARE: FRACTIONS DECIMALS ANGLES ± .xx± .02 ± ± .xxx± .010			CONTRACT NO.		SMT SIERRA MICROWAVE TECHNOLOGY TITLE: OUTLINE FOR DJT0512-101
MATERIAL:			APPROVALS	DATE	
FINISH:			DRAWN: D STALEY	5-18-98	
			CHECKED: CSS	5-22-98	
			DESIGN ENG. JLA	5-22-98	
			MAT. & PROCESSES		
			Q.A.		
603-0070-001		DJT0512-101		SIZE B	FSCM NO. 1CY63
LIST OF MAT'L		USED ON		DWG NO. 605-0430-001	REV A
APPLICATION		DO NOT SCALE DRAWING		BRDR SCALE	SHEET OF