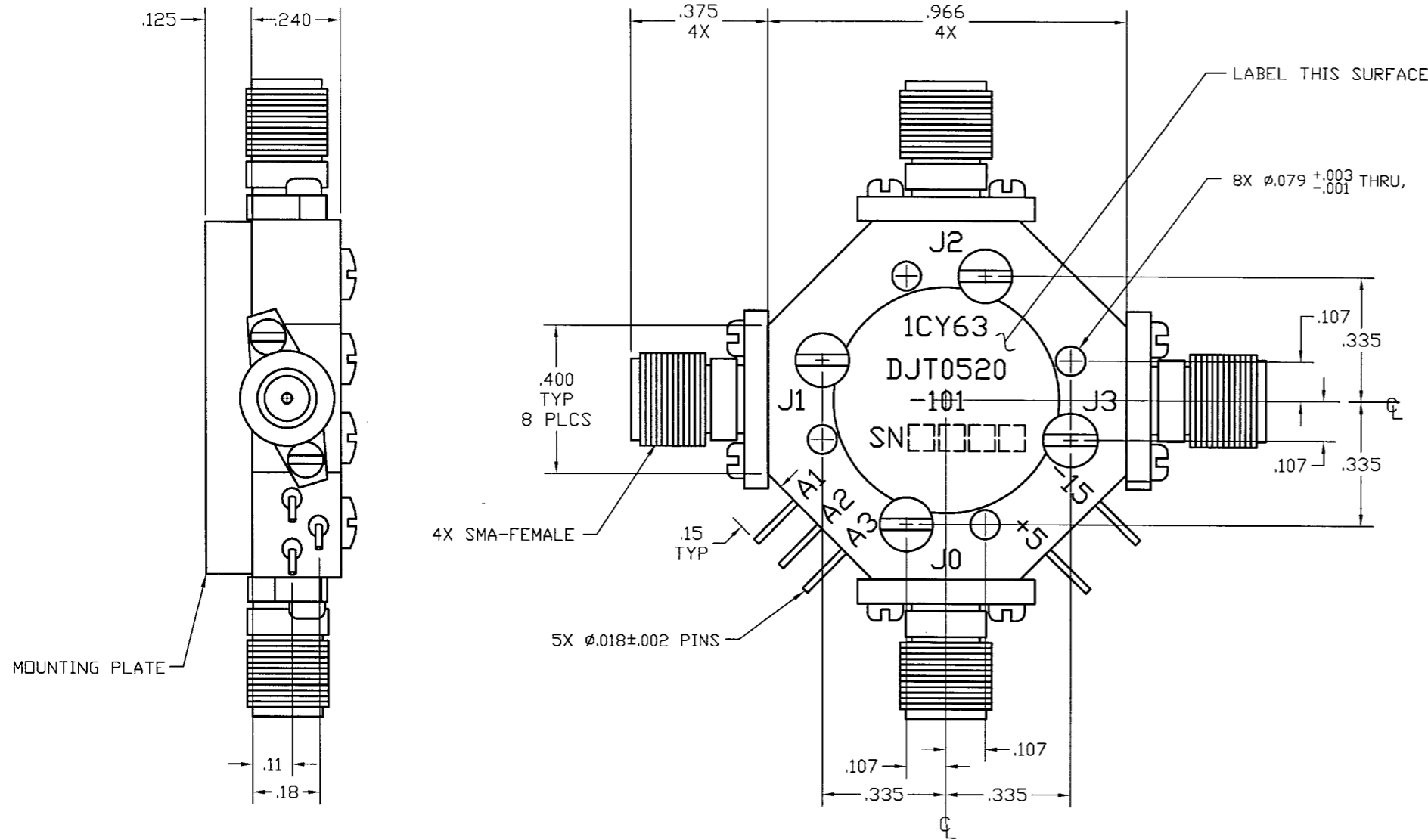


COMPUTER GENERATED DRAWING  
MANUAL CHANGES NOT AUTHORIZED

REVISIONS

REV.	DESCRIPTION	DATE	RELEASED BY
NC	INITIAL RELEASE	8-20-91	LD
A	REV PER ECN: 5160	12-08-95	BM
B	REV PER ECN: 6822, 9830	5-09-05	R.T.S



SPECIFICATIONS:

FREQUENCY:	0.5 - 20.0 GHz	
INSERTION LOSS:	0.5 - 4.0 GHz	1.9 dB MAX
	4.0 - 12.0 GHz	2.5 dB MAX
	12.0 - 18.0 GHz	3.2 dB MAX
	18.0 - 20.0 GHz	3.6 dB MAX
VSWR:	0.5 - 12.0 GHz	2.0:1 MAX
J0 - ON ONLY	12.0 - 20.0 GHz	2.2:1 MAX
J1, J2, J3 - ON OR OFF		
ISOLATION:		60 dB MIN
SWITCHING SPEED:		100 nSEC MAX
CONTROL:	TTL LOW - INSERTION LOSS	
	TTL HIGH - ISOLATION	
TEMPERATURE:		
OPERATING:	-54° TO +100° C	
STORAGE:	-54° TO +100° C	
BIAS CONDITIONS:	+5V @ 150 mA MAX	
	-15V @ 75 mA MAX	

MOUNTING PLATE

ITEM	QTY REQ'D	FSCM NO.	PART OR IDENTIFICATION NO.	NOMENCLATURE OR DESCRIPTION	MATERIAL SPECIFICATION								
<b>PARTS LIST</b>													
UNLESS OTHERWISE SPECIFIED DIMENSIONS ARE IN INCHES TOLERANCES ARE: FRACTIONS DECIMALS ANGLES ± .xx± .02 ± xxx± .010			CONTRACT NO.		 <b>TITLE:</b> OUTLINE FOR DJT0520-101								
MATERIAL:			APPROVALS	DATE									
FINISH:			DRAWN: <i>M.S. Seipel</i>	8-20-91									
603-0070-001 DJT0520-101			CHECKED:	DESIGN ENG. <i>L. DORIAN</i>									
LIST OF MAT'L USED ON			MAT. & PROCESSES	8-20-91									
APPLICATION			Q.A.		<table border="1" style="width: 100%;"> <tr> <td>SIZE</td> <td>FSCM NO.</td> <td>DWG NO.</td> <td>REV</td> </tr> <tr> <td>B</td> <td>1CY63</td> <td>605-0069-001</td> <td>B</td> </tr> </table>	SIZE	FSCM NO.	DWG NO.	REV	B	1CY63	605-0069-001	B
SIZE	FSCM NO.	DWG NO.	REV										
B	1CY63	605-0069-001	B										
DO NOT SCALE DRAWING			BRDR SCALE		SHEET OF								