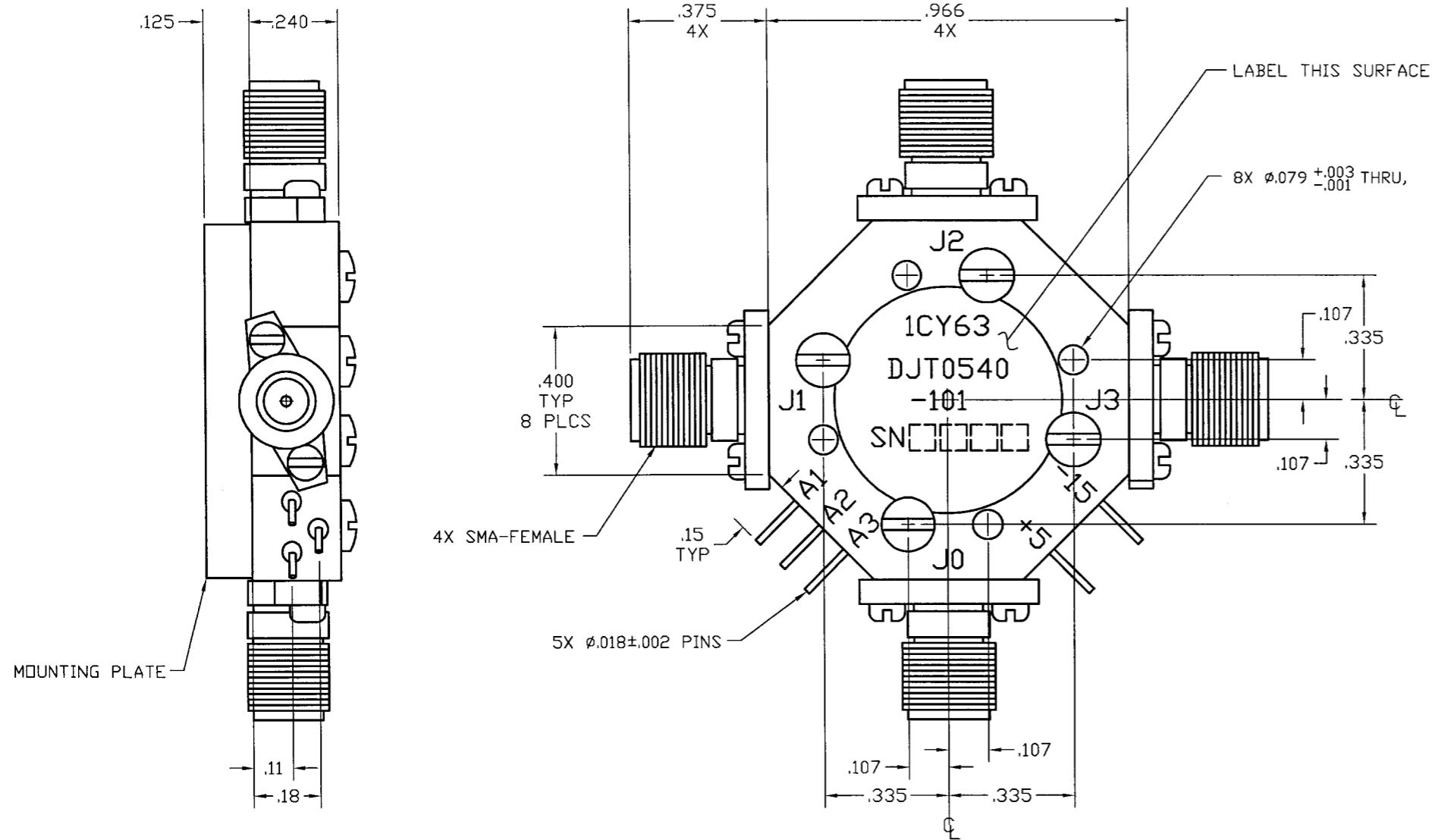


COMPUTER GENERATED DRAWING
MANUAL CHANGES NOT AUTHORIZED

REVISIONS

REV.	DESCRIPTION	DATE	RELEASED BY
NC	INITIAL RELEASE	3-26-98	JLA
A	REV PER ECN: 6822, 9830	5-09-05	R.Ts



SPECIFICATIONS:

FREQUENCY:	0.5 - 4.0 GHz
INSERTION LOSS:	1.9 dB MAX
VSWR:	2.0:1 MAX
J0 - ON ONLY J1, J2, J3 - ON OR OFF	
ISOLATION:	60 dB MIN
SWITCHING SPEED:	100 nSEC MAX
CONTROL:	TTL LOW - INSERTION LOSS TTL HIGH - ISOLATION
TEMPERATURE:	
OPERATING:	-54° TO +100° C
STORAGE:	-54° TO +100° C
BIAS CONDITIONS:	+5V @ 150 mA MAX -15V @ 75 mA MAX

ITEM	QTY REQ'D	FSCM NO.	PART OR IDENTIFICATION NO.	NOMENCLATURE OR DESCRIPTION	MATERIAL SPECIFICATION	
PARTS LIST						
UNLESS OTHERWISE SPECIFIED DIMENSIONS ARE IN INCHES TOLERANCES ARE: FRACTIONS DECIMALS ANGLES ± .XX± .02 ± .xxx± .010			CONTRACT NO.		SMT SIERRA MICROWAVE TECHNOLOGY TITLE: OUTLINE FOR DJT0540-101	
MATERIAL:			APPROVALS	DATE		
FINISH:			DRAWN: A WILSON	3-25-98		
603-0070-001 DJT0540-101			CHECKED:	DESIGN ENG. JLA		3-25-98
LIST OF MAT'L USED ON			MAT. & PROCESSES	Q.A.		
APPLICATION			DO NOT SCALE DRAWING	SIZE B	FSCM NO. 1CY63	
				BRDR SCALE	DWG NO. 605-0424-001	
					REV A	
					SHEET OF	