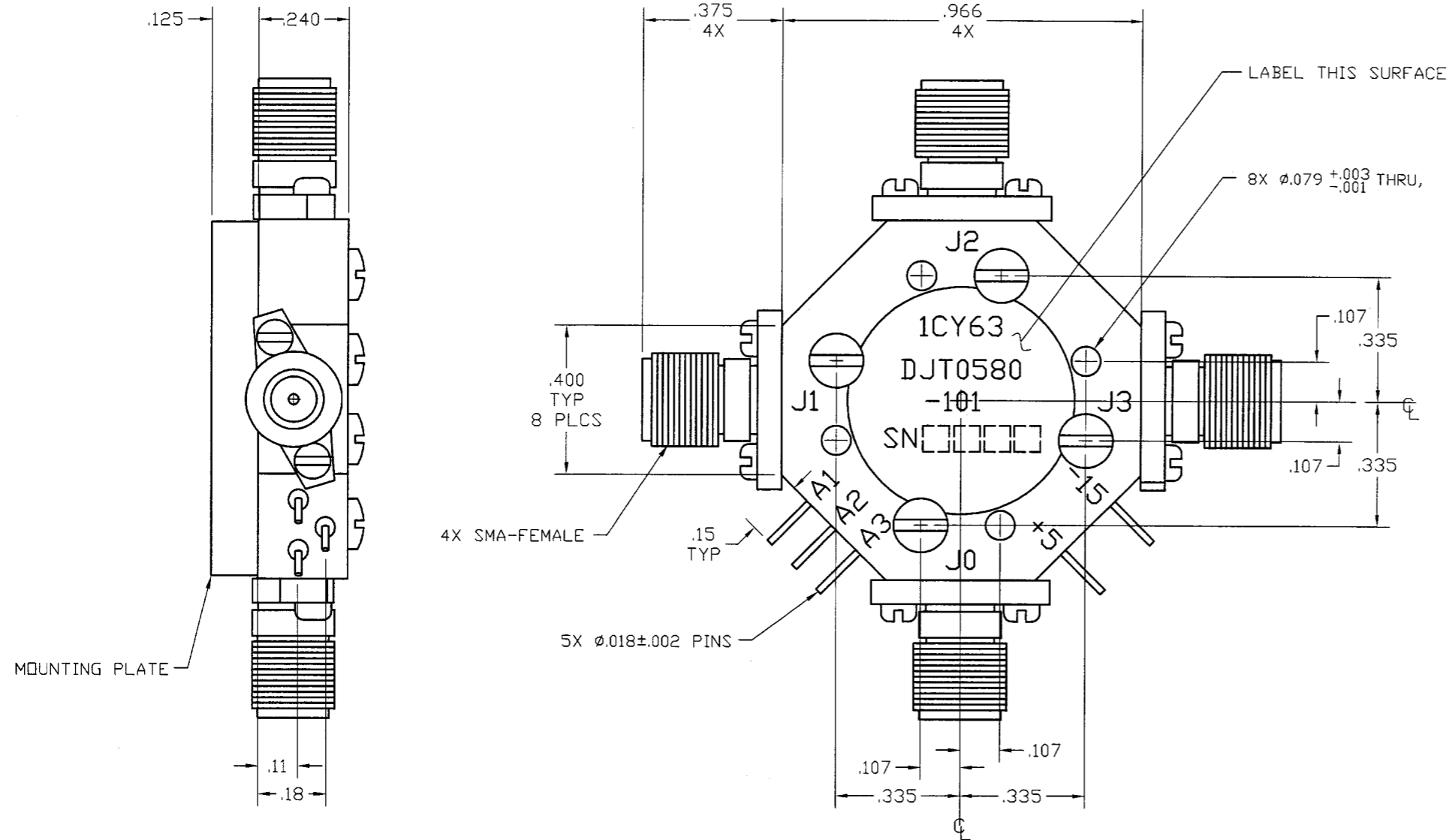


REVISIONS

REV.	DESCRIPTION	DATE	RELEASED BY
NC	INITIAL RELEASE	7-07-91	KN
A	REV PER ECN: 6822, 9830	5-09-05	R.TS



SPECIFICATIONS:

FREQUENCY:	0.5 - 8.0 GHz
INSERTION LOSS:	0.5 - 4.0 GHz 1.9 dB MAX 4.0 - 8.0 GHz 2.5 dB MAX
VSWR:	2.0:1 MAX
J0 - ON ONLY J1, J2, J3 - ON OR OFF	
ISOLATION:	60 dB MIN
SWITCHING SPEED:	100 nSEC MAX
CONTROL:	TTL LOW - INSERTION LOSS TTL HIGH - ISOLATION
TEMPERATURE:	
OPERATING:	-54° TO +100° C
STORAGE:	-54° TO +100° C
BIAS CONDITIONS:	+5V @ 150 mA MAX -15V @ 75 mA MAX

ITEM	QTY REQ'D	FSCM NO.	PART OR IDENTIFICATION NO.	NOMENCLATURE OR DESCRIPTION	MATERIAL SPECIFICATION
PARTS LIST					
UNLESS OTHERWISE SPECIFIED DIMENSIONS ARE IN INCHES TOLERANCES ARE: FRACTIONS DECIMALS ANGLES ± .xx± .02 ± .xxx± .010				CONTRACT NO.	
MATERIAL:				APPROVALS	
FINISH:				DATE	
603-0070-001 DJT0580-101				DRAWN: SCHIRMER 7-07-91	
LIST OF MAT'L USED ON				CHECKED:	
APPLICATION				DESIGN ENG. K NENDZA 7-07-91	
DO NOT SCALE DRAWING				MAT. & PROCESSES	
				Q.A.	
				TITLE:	
				OUTLINE FOR DJT0580-101	
		SIZE	FSCM NO.	DWG NO.	REV
		B	1CY63	605-0192-001	A
				BRDR SCALE	SHEET OF

SMT SIERRA MICROWAVE TECHNOLOGY